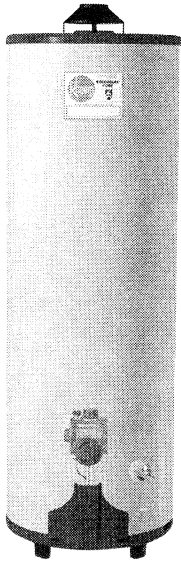


Fury Rheemglas® Energy Miser® Gas Water Heater



Available in 30, 40, 50, 75 and 100 Gallon Tall – 30, 40 and 50 Gallon Short Models

► 6-Year Limited Tank and Parts Warranty*

- Brass drain valve
- Temperature and pressure relief valve included
- R-Foam® insulation process for superior heat retention
- Gasmaster™ burner with precision port alignment for even heat transfer
- Heat saving flue baffle design
- Models of 60,000 BTU and higher feature durable cast iron burner for both natural and LP gas
- LP models feature durable stainless steel burners designed specifically for LP gas and Robertshaw® controls
- Meets or exceeds National Appliance Energy Conservation Act (NAECA) requirements

► HIGH EFFICIENCY MODELS FEATURE:

- High performance and recovery
- R-Foam® insulation process with approx. R-value of R-20
- Compliant with many gas utility incentive programs

* See Residential Warranty Information Brochure for complete warranty information.

Energy Factor and Average Annual Operating Costs based on D.O.E. (Department of Energy) test procedures. D.O.E. national average fuel rate natural gas 60.40¢/therm; LP 98.30¢/gallon.



TYPE	DESCRIPTION		FEATURES						ROUGHING IN DIMENSIONS (SHOWN IN INCHES)								ENERGY INFORMATION					
	GAL. CAP.	MODEL NUMBER	GAS INPUT IN THOUS. BTU/HR.		RECOVERY IN G.P.H. 90° RISE		FIRST HOUR DEL. G.P.H.		HT. TO VENT A	TANK HT. B	DIAM. C	HT. TO GAS CONN. D	VENT SIZE E	WATER CONN. CMTR. F	HT. TO SIDE T&P G	WATER CONN. H	SHIP. WT. (LBS)	ENERGY FACTOR		AVG. ANN. OPER. COSTS		APPROX. R. FACTOR
			NAT.	LP	NAT.	LP	NAT.	LP									NAT.	LP	NAT.	LP		
TALL	40	41VR40 (N)* †	40	40	40.4	40.4	68	68	61-3/4	58-1/2	21	13-1/4	3	8	—	3/4	130	0.62	0.62	\$146	\$259	R-20
	50	41VR50 (N)* †	40	40	40.4	40.4	83	83	60-3/4	57-1/2	23	13-1/4	3	8	—	3/4	160	0.62	0.62	\$146	\$259	R-20
TALL	30	25V30-6(-7 for LP)(N)*	32	30	32.3	30.3	53	51	59	56	15-3/4	13-1/4	3	8	—	3/4	96	0.57	0.59	\$159	\$272	R-6.7
	40	25V40-38(-36P for LP)(N)*	38	36	38.4	36.4	65	65	60	56-1/2	17-3/4	13-1/4	3	8	—	3/4	110	0.55	0.55	\$164	\$292	R-6.7
	40	25V40(N)*	40	40	40.4	40.4	68	68	62	58	17-3/4	13-1/4	3	8	—	3/4	120	0.56	0.56	\$161	\$287	R-6.7
	50	25V50(N)*	40	40	40.4	40.4	83	83	61	57	19-3/4	13-1/4	3	8	—	3/4	148	0.54	0.54	\$167	\$297	R-6.7
	50	25V50-4	50	50	50.6	50.6	83	83	61	57	19-3/4	13-1/4	4	8	—	3/4	144	0.53	0.53	\$171	\$303	R-6.7
	50	25V50-6*** †	60	60	60.6	60.6	95	95	63-1/2	59-3/4	23	14-3/4	4	11	53-3/4	1	179	0.54	0.54	\$167	\$297	R-20
	75	25V75** †	75	69	76.3	69.7	132	116	64-1/2	60-1/2	26-1/4	14-3/4	4	11	54-1/2	1	320	0.49	0.49	\$184	\$328	R-16.7
	100	25V100**	75	69	75.8	69.7	135	135	68	64	26-1/4	14-3/4	4	11	58	1	350	0.48	0.44	\$188	\$365	R-8.7
SHORT	30	21V30S-2 (N)*	26	26	26.3	26.3	50	50	48-3/4	45-1/4	17-3/4	13-1/4	3	8	—	3/4	93	0.57	0.57	\$159	\$282	R-6.7
	30	41V30S (N)*	34	34	34.4	34.4	54	54	50-1/2	46-1/2	17-3/4	13-1/4	3	8	—	3/4	102	0.58	0.58	\$156	\$277	R-6.7
	40	21V40S-2 (N)*	28	28	28.3	28.3	66	66	50-1/4	47-1/2	19-3/4	13-1/4	3	8	—	3/4	122	0.57	0.57	\$159	\$282	R-6.7
	40	41V40S-40** (N)*	40	40	40.4	40.4	68	68	52-1/2	48-1/2	19-3/4	13-1/4	3	8	42-3/4	3/4	134	0.56	0.56	\$161	\$287	R-6.7
	50	41V50S** (N)*	40	—	40.4	—	73	—	54	48-1/2	22-1/4	13-1/4	3	8	40-1/2	3/4	140	0.53	—	\$171	—	R-8.7

* For SCAQMD rule 1121 compliance models (California only). Add "N" suffix to the model number: Example 41VR40N.

** Side relief valve connection.

† Complies with provisions of California Title 24 New Construction Code.

• Specify LP gas when ordering. Add "P" suffix to the model number: Example: 41VR40P.

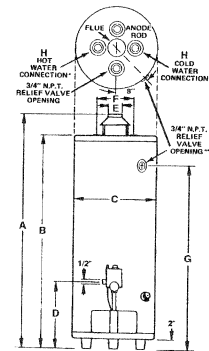
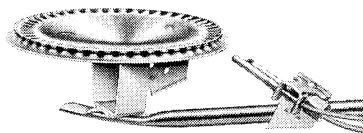
These units are designed to meet or exceed ANSI (American National Standards Institute) requirements and have been tested according to D.O.E. test procedures and meet or exceed the energy efficiency requirements of NAECA, ASHRAE standard 90, BOCA Code and all state energy efficiency performance criteria for energy consuming appliances.

Before purchasing this appliance, read important energy cost and efficiency information available from your retailer.

THE GASMMASTER™ BURNER

Durable aluminized steel construction. Designed for efficient, quiet operation; precision port alignment, even heat transfer.

Features energy saving low input pilot – only 350 to 400 BTUH. Well protected to maintain alignment, yet easy to light.



* Hot and Cold Connections are 1" N.P.T. on 4" Vent Models except 21V50-4.
** 4" Vent Models have a side relief Valve opening except 21V50-4.

In keeping with its policy of continuous progress and product improvement. Rheem reserves the right to make changes without notice.

Rheem Water Heaters • Post Office Box 244020 • Montgomery, Alabama 36124-4020

PRINTED IN U.S.A

05-00 WP

FORM NO. 101-2 Rev. 19